

Geography of Osaka / Access

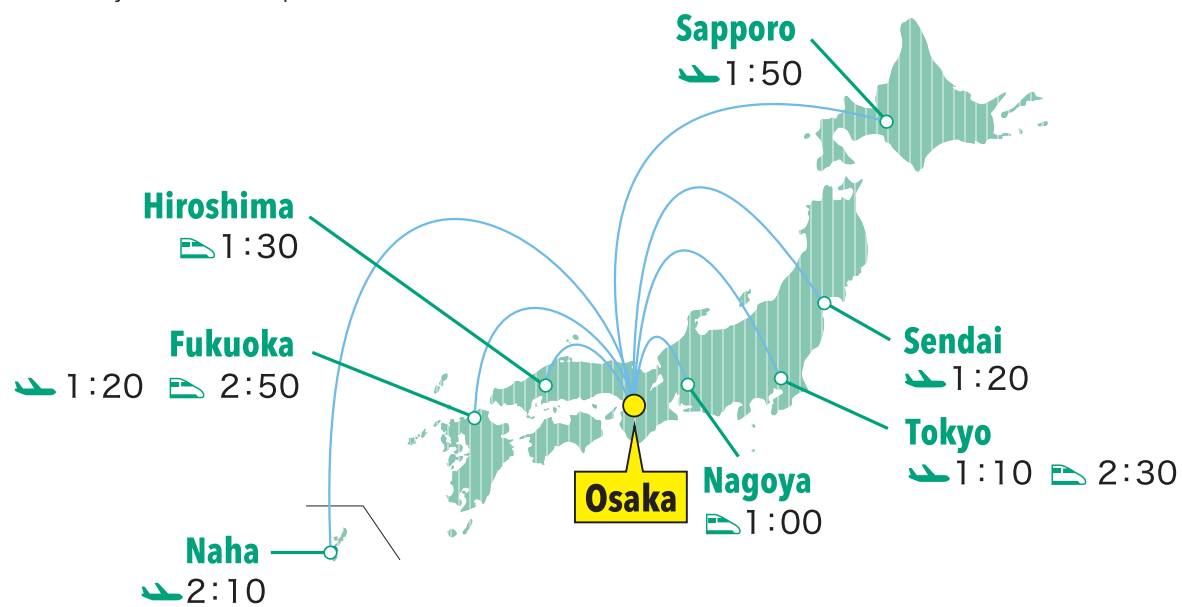
Global Connections

Osaka is the best location for companies to gain a foothold in Asia. Osaka is currently undergoing large-scale urban development, which will make access from overseas even more convenient.



Convenient Access to Transportation

Osaka has a well-developed transportation network especially by air and rail, which can offer you convenient access to major cities in Japan.



Cited and re-edited from "INVEST OSAKA, an Osaka City Investment Guidebook"

business with OSAKA



Photo from Aqua Metropolis Osaka consortium

CONTACT OSAKA BUSINESS DEVELOPMENT AGENCY

Mail bw-osaka@obda.or.jp HP <https://www.obda.or.jp/en.html>



OSAKA BUSINESS DEVELOPMENT AGENCY

Osaka, an Ideal Hub City for Companies with Innovative Ideas

Osaka has long flourished as a commercial center, and is home to numerous businesses that support innovation around the world with their proprietary technologies and ideas. Currently, many large internationally renowned companies are proud to claim Osaka as the origin of its international prominence. A diverse range of small and medium-sized enterprises (SMEs), startups, universities, research institutes, and others have supported these large companies in building solid industrial bases that have contributed in creating seeds for new businesses every day.

Although items such as instant noodles, conveyor-belt sushi, and automatic ticket gates at train stations have already established a profound presence in our normal daily life, these are all inventions that were developed through Osaka's creative ingenuity and application of unique technologies. Henceforth, Osaka will continue to create products and services that will surprise the world and further enhance our quality of life.



©Osaka Convention & Tourism Bureau

Examples of Osaka's Large Companies and Products



Photo from Panasonic Holdings Corporation



Photo from NISSIN FOODS HOLDINGS CO., LTD.

Number of Companies in Osaka

Second only to the Tokyo metropolitan area with respect to the number of companies, Osaka City is home to a myriad of companies than any other major city in Japan. Another unique characteristic is that a substantial percentage of Osaka's SMEs are capable of quick decision-making.

Number of Companies in Major Cities

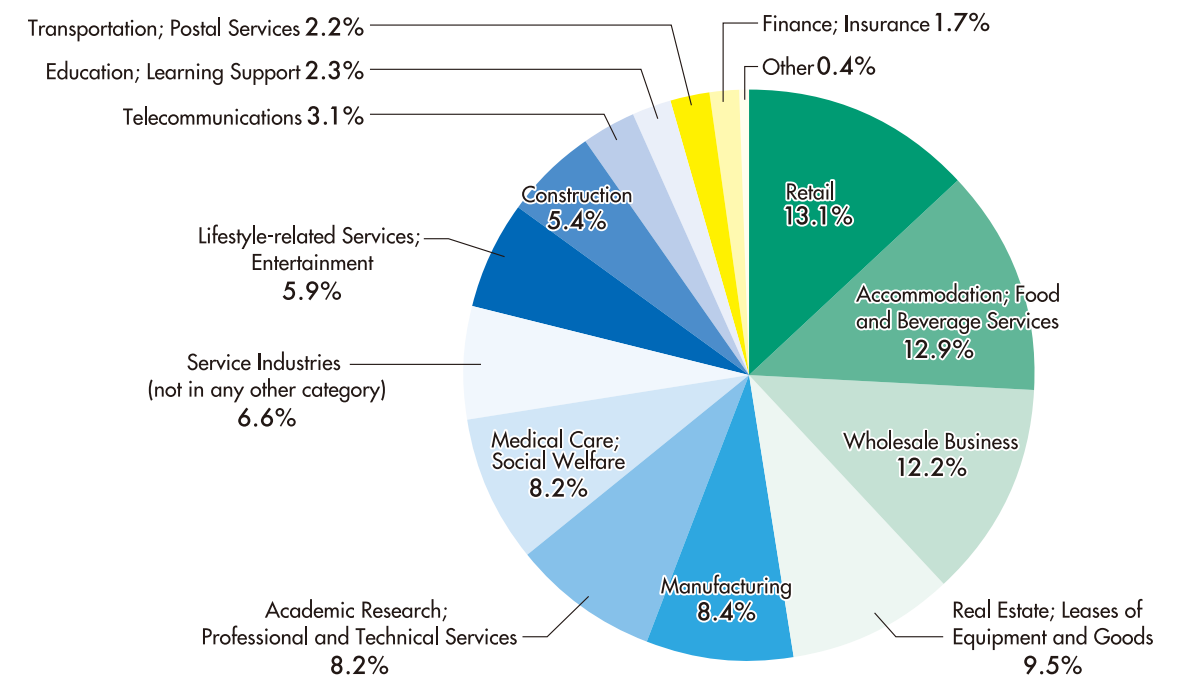
	SMEs	Large Companies
Osaka	120,703	840
Yokohama	72,161	328
Nagoya	76,510	389
Tokyo	330,365	4,398

Source: The Small and Medium Enterprise Agency website

Concentration of Diverse Industries

Osaka City is characterized by an extensive range of industries such as retail, wholesale, manufacturing, and medical care. By bringing together such diverse industries, Osaka City has created a business environment in which industries can work together closely to facilitate innovation.

Composition Ratio of Osaka's Privately Managed Businesses



Source: 2021 Economic Census for Business Activity

Osaka Business Development Agency, a public body responsible for supporting SMEs of Osaka City Government

Osaka Business Development Agency is a public body that implements Osaka City's support policies for SMEs. At the Osaka Business Development Agency, various business support programs are offered at each location:

- **Business Innovation Center Osaka, a comprehensive support base for SMEs**
- **Osaka Innovation Hub, a base for creating innovation where entrepreneurs and technical professionals can gather to address challenges on the global stage**
- **TEQS, an incubator base that promotes the utilization of advanced technologies**

Osaka's Potential

Why not do business with Osaka's SMEs and startups?

- Matching startups with innovative businesses and manufacturing companies with high technological capabilities
- Joint development to accelerate new product development and new businesses
- Pioneering partners in Japan who have set one's sight on entering the Asian market

Upon request, the Osaka Business Development Agency, which is most familiar with SMEs in Osaka, will introduce you to companies in Osaka.

Innovative Startups

Osaka is a place where distinguished entrepreneurs and technical professionals can gather to address challenges on the global stage. Osaka Innovation Hub, one of Japan's pre-eminent startup support centers, fosters innovative startups and provides support in connecting you to startups. By leveraging the services and technologies of startups that were created in Osaka, it can guide you in developing new markets, as well as providing new value and services to society.



Daily Commodities and Food-related Companies

Osaka is home to many companies that create unique, high-quality daily necessities and food products, as well as sustainable products. The Business Innovation Center Osaka provides support for new product development and sales channel development. These products created daily in Osaka can make your life more enriching and enjoyable!



Businesses with Cutting-edge Technologies

Osaka is deeply committed toward fostering companies that are making strides in using cutting-edge technologies, such as IoT, robotics and AI, in their own businesses. TEQS X-Tech Promotion Business Div., an incubator base for these businesses, fosters the development of new businesses by supporting the development of products utilizing 5G and demonstrations of advanced technologies, such as robotics. Utilizing the businesses and technologies created here can bring innovation to everyone's business activities.



Healthcare-related Businesses

Osaka has historically been home to a high concentration of companies dealing in pharmaceuticals, as well as many advanced companies in the medical, nursing care, and health-related fields. The "Osaka Top Runner Development Project," a program to support the creation of new businesses, has also generated many new businesses, including excellent medical testing technologies and health management services. These businesses contribute to providing better services and improving the working environment for everyone.



Manufacturing Companies

One of Osaka's great strengths is the concentration of countless manufacturing companies with advanced technological capabilities, among which are companies that support the space industry. The Business Innovation Center Osaka, a comprehensive support center for Osaka City's SMEs, provides business matching support for many companies with highly functional processing technologies, materials, and products that contribute to a recycling-oriented society, such as metal processing, films, and textiles. The unparalleled technologies and materials of Osaka's industries contribute to the creation of new added value for your products.



Long-established companies that continue to innovate and manage their businesses

While new businesses are being generated, there are also many companies that have been in business for more than 100 years in Osaka, which has long been a city of commerce and is known as the "kitchen of the nation" for the variety of goods it attracts from all over Japan. Doing business with companies that have a mentality to take on new challenges, become innovative in response to ever-changing times, as well as maintain traditional technologies can help create new value for your products and services.

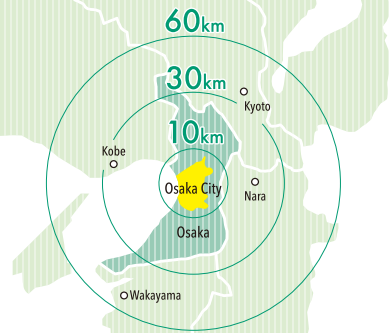
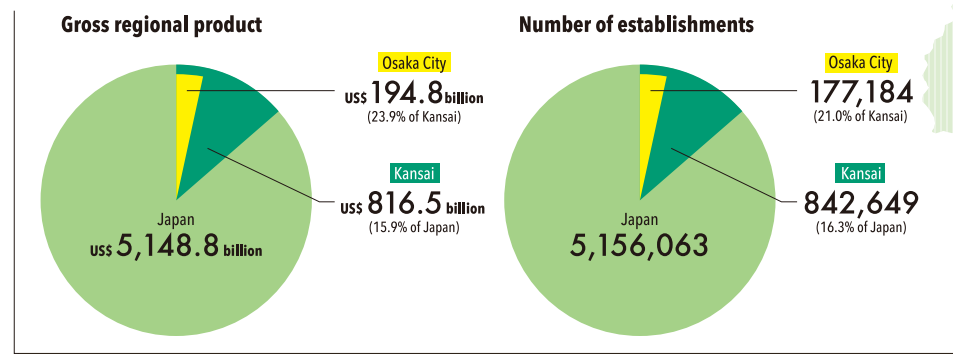
Osaka, the Heart of the Kansai Region

Osaka is located in the center of the Kansai region, which has the second-largest economy in Japan. Osaka is also adjacent to major cities such as Kyoto, Kobe, and Nara, making it very easy to travel around.

Kansai=Osaka, Kyoto, Hyogo, Nara, Shiga, Wakayama prefectures

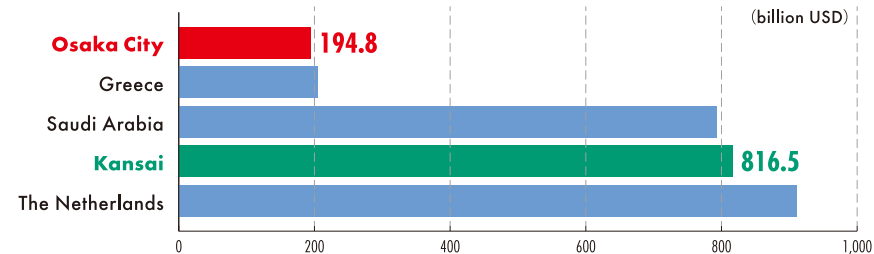
Japan vs. Kansai vs. Osaka City

Source: City of Osaka, "The Outline Osaka Economy 2023," Ministry of Internal Affairs and Communications, "2021 Economic Census for Business Activity," "2020 Population Census"



Cited from "INVEST OSAKA, an Osaka City Investment Guidebook"

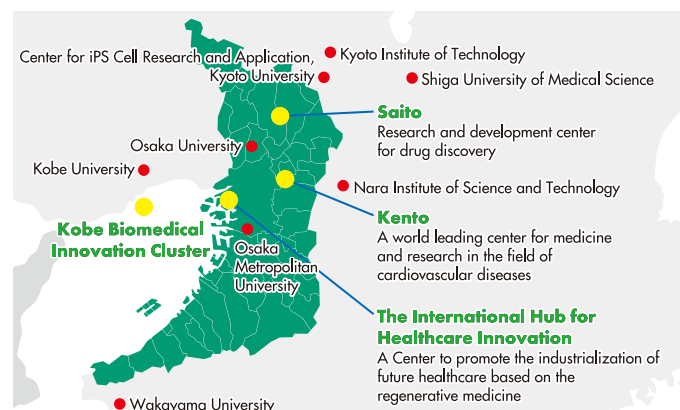
GDP of Osaka and Kansai



In terms of nominal GDP, the Kansai region's economic scale is comparable to the Netherlands.

Concentration of Universities and Research Institutes

Some of Japan's leading universities are located within a 50-kilometer radius of the center of Osaka. In addition, "industrial clusters" that consist of universities, world-class research institutes, companies of various industries and fields, and industrial support organizations are geographically placed throughout various parts of Kansai. Above all, industry-academia-government collaboration is being promoted in the fields of medicine, biotechnology, and green life.



Support for Foreign Companies Entering Osaka

Osaka Business and Investment Center (O-BIC)

O-BIC provides one-stop support services to meet the needs of foreign companies wishing to establish a business presence in Osaka.



Examples of Support Introduction of services for procedures such as corporate registration, acquisition of status of residence, etc. / Real estate information such as office spaces / Introduction of companies for interpretation, translation, market research, etc. / Provision of bases to prepare for entry into the market, etc.

Osaka Global Finance One-Stop Support Center

Experienced consultants provide a one-stop consulting service for financial foreign companies, foreign investors, and others.

Examples of Support Professional inquiries such as obtaining financial licenses / Consultation support for business and lifestyle issues, etc.



Chance to Connect with the World in the Expo Year

Hosting Expo 2025 in Osaka

Theme Designing Future Society for Our Lives

Concept People's Living Lab

Period from April 13 to October 13, 2025

Projected number of visits Approx. 28.2 million

Venue Yumeshima, Osaka



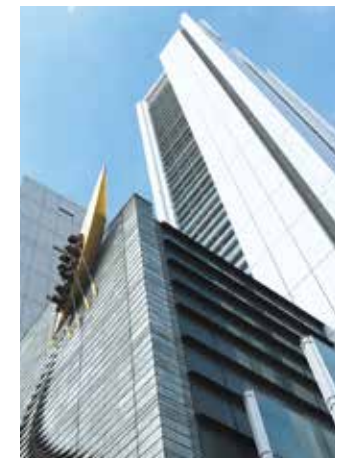
Provided by: EXPO 2025 Osaka Pavilion Association



Provided by: Japan Association for the 2025 World Exposition

Large-scale business meetings and other events are scheduled to take place

Osaka has the largest international exhibition hall in western Japan and other event venues located in the office district. In conjunction with the Expo year, which attracts people from all over the world, large-scale business meetings, and other events are scheduled to be held at several venues. Furthermore, support organizations will work together to support business negotiations.



If you are seeking new business opportunities, please come to Osaka!